



Sustainable Tourism Indicators: Data-Driven Strategies for Destinations

Ana Moniche
Turismo y Deporte de Andalucía

Sustainable Tourism Indicators: Data-Driven Strategies for Destinations

Vienna, 12-13 September 2024



Spain Tourism TSI Project: Support to Spain's tourism ecosystem: towards a more sustainable, resilient and digital tourism

Regions: How to align with essential priorities such as the Tourism Transition Pathways, EU Green Deal, the EU Climate Law, the Sustainable Development Goals?

Difficulties to implement a system of indicators for implementing policies for sustainable tourism related with: tools, data, actors and resources

Spain Tourism TSI Project: Support to Spain's tourism ecosystem: towards a more sustainable, resilient and digital tourism

European Commission (DG Reform) / OECD technical assistance

Assisting Andalusia, Catalonia, Navarra and Valencia to develop and pilot a system of indicators to design policies for the sustainability of tourism.

Develop a tool allowing to benchmark between destinations and compare progress

Bottom-up approach: NUTS2 but local integration.

Capacity-building exercise, collaborative learning

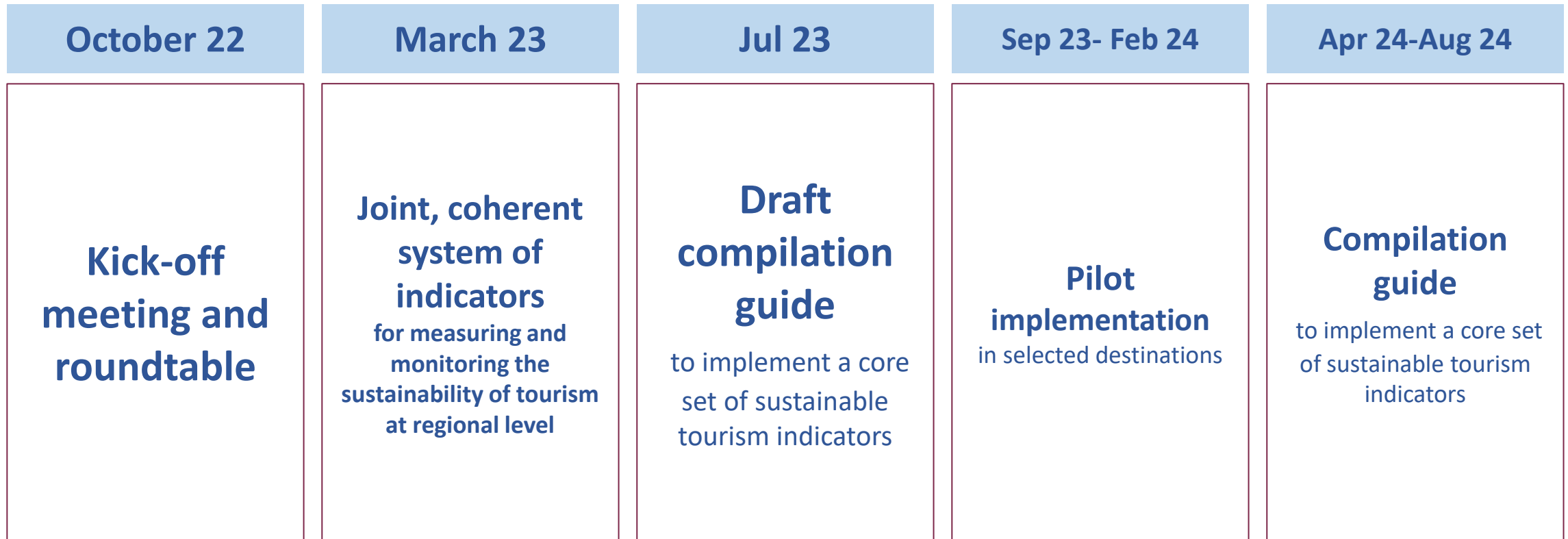


TSI Actors

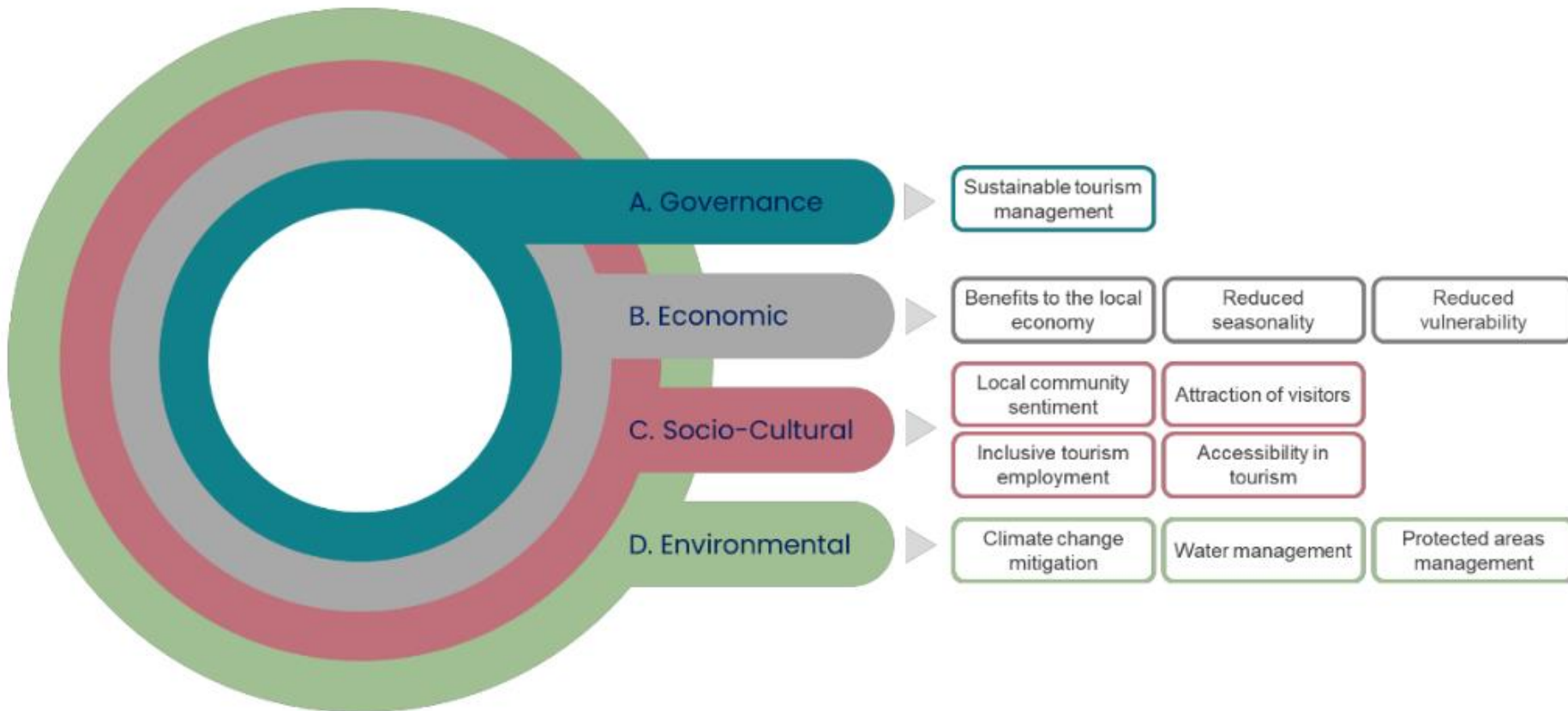
- European Commission (DG Reform) / OECD technical assistance
- National Level: Spain Government
- Regional level: Ministry of Tourism, Culture and Sports (Andalusia), Directorate General of Tourism (Catalonia), Directorate of Tourism (Navarra) and Directorate of Tourism (Region of Valencia)
- External actor: Tourism of Tomorrow Lab providing support



Spain Tourism TSI Project: Support to Spain's tourism ecosystem: towards a more sustainable, resilient and digital tourism



Spanish regions tourism sustainability indicator framework: Current thinking on pillars and key policy issues



Spanish regions tourism sustainability indicator framework: Compilation readiness

Dimension	Policy issue	Indicator	Compilation readiness before pilot	Compilation readiness after pilot
Governance	Sustainable tourism management	A.1 Sustainable tourism development strategy	●	●
Economic	Benefits to the local economy	B.1 Tourism employment	●	●
		B.2 Tourism value-added	●	●
		B.3 Tourism expenditure	●	●
		B.4 Accommodation occupancy	●	●
	Reduced seasonality	B.5 Tourism seasonality	●	●
	Reduced vulnerability	B.6 Market dependency	●	●

Colour coding for compilation readiness:

●	Indicator can be measured as of now (data is available for at least one of the metrics)
●	Data sources have been identified, but methodology needs refinement
●	Data sources still need to be identified



Spanish regions tourism sustainability indicator framework: Compilation readiness

Dimension	Policy issue	Indicator	Compilation readiness before pilot	Compilation readiness after pilot
Socio-cultural	Local community sentiment	C.1 Residents' perception of tourism	●	●
		C.2 Tourism pressures on local population	●	●
	Attraction of visitors	C.3 Tourist satisfaction	●	●
	Inclusive tourism employment	C.4 Gender equality	●	●
		C.5 Youth employment	●	●
		C.6 Job security	●	●
	Accessibility in tourism	C.7 Accessibility in tourism	●	●
Environmental	Climate change mitigation	D.1 Carbon emissions	●	●
		D.2 Green mobility infrastructure	●	●
		D.3 Renewable energy use	●	●
	Water management	D.4 Tourism water use	●	●
		D.5 Bathing-water quality	●	●
	Protected areas management	D.6 Tourism pressure in protected areas	●	●
		D.7 Management of natural parks	●	●

Colour coding for compilation readiness:

●	Indicator can be measured as of now (data is available for at least one of the metrics)
●	Data sources have been identified, but methodology needs refinement
●	Data sources still need to be identified



TSI SPAIN DISSEMINATION EVENT

Andalucía Lab Headquarters
N-340, Km 189, 6,
29604 Marbella, Málaga

Indicators to measure and monitor the
sustainability of tourism at the regional level in Spain



Organised by:



Funded by
the European Union

- **Insightful Discussions:** Explore the experiences, results, and key learnings from the piloting of sustainability indicators in the four regions.
- **Future Outlook:** Discover how these regions plan to implement and utilize these indicators to shape more sustainable tourism policies.
- **Actionable Insights:** Learn how data can be transformed into actionable strategies for a more sustainable tourism future in Spain and beyond.
- **Interactive Breakout Groups:** For those attending in person, engage in peer learning sessions to discuss the use of indicators in addressing crucial policy issues.

TSI SPAIN DISSEMINATION EVENT

Andalucía Lab Headquarters
N-340, Km 189, 6,
29604 Marbella, Málaga

Indicators to measure and monitor the
sustainability of tourism at the regional level in Spain



Organised by:



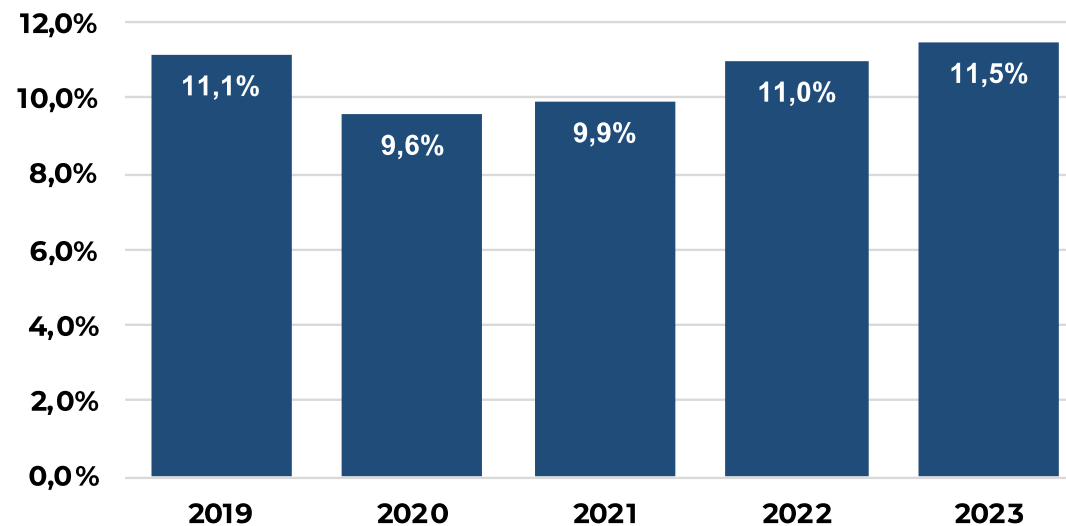
Funded by
the European Union

Some examples on how this system of indicators incorporates various approaches for generating policy-oriented insights

Policy oriented indicator using year-over-year analysis of calculated relevant indicators using official data sources.

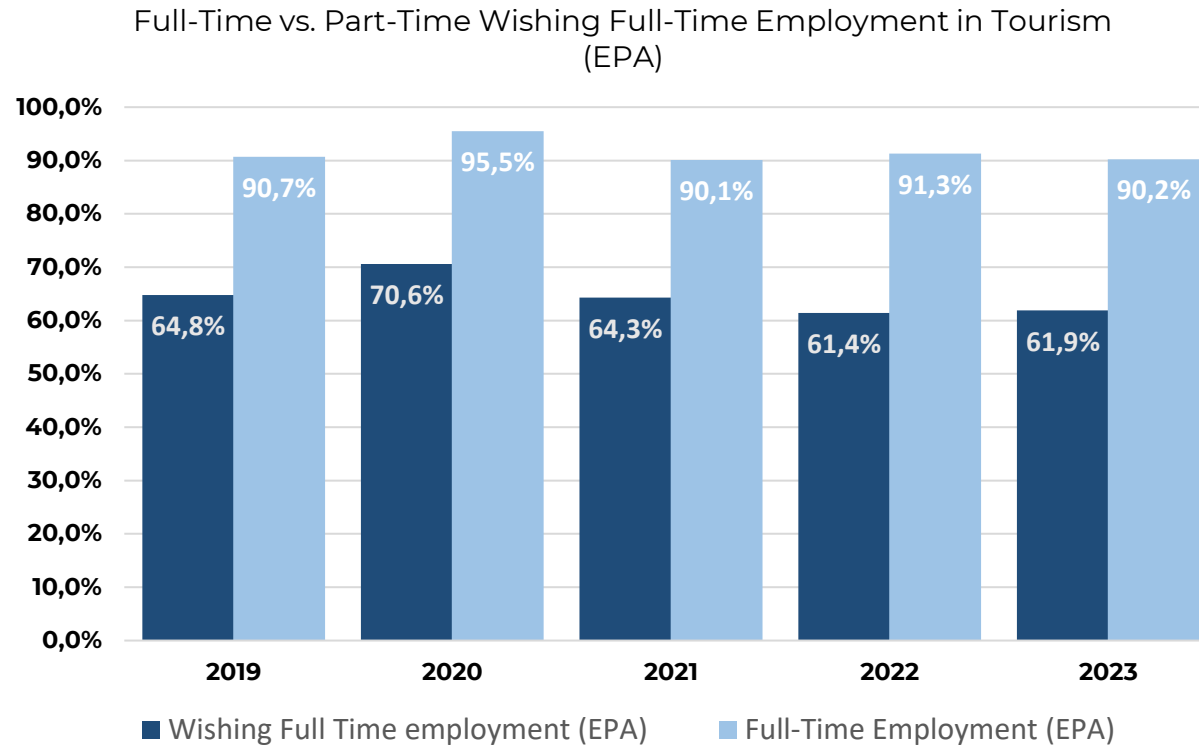
Contribution of tourism employment

Direct tourism employment as percentage of total employment



Source: Social Security

Policy oriented indicator using year-over-year analysis of calculated relevant indicators using official data sources.

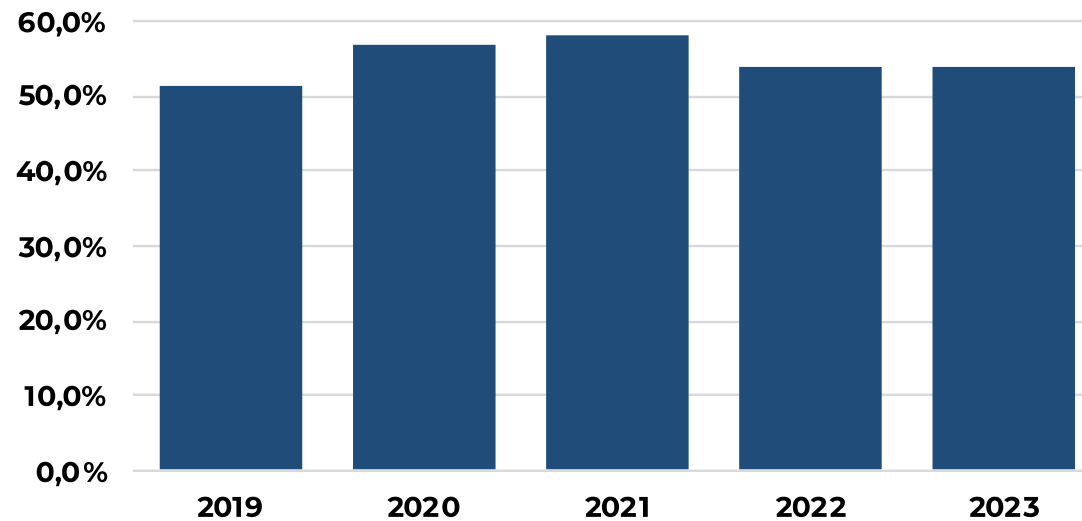


Source: Labour Force Survey

Policy oriented indicator using Ad-Hoc indicators using official data sources to provide more detailed insights beyond basic metrics

Airline dependency/ vulnerability

Share of the passengers from the top three airlines in relation to the total air travel passengers

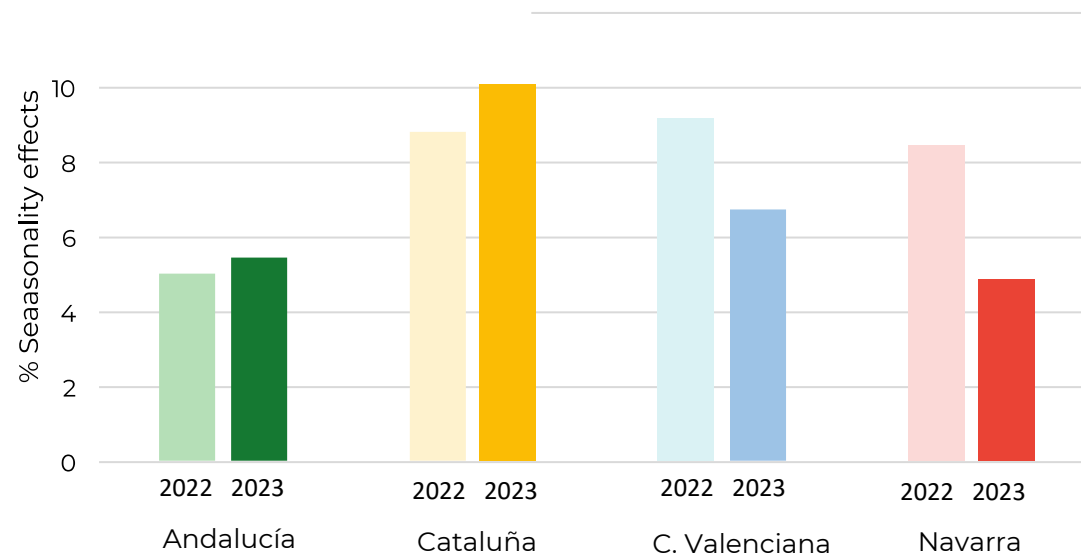


Source: AENA

Policy oriented indicator using official data sources to benchmark across regions, while integrating local contexts through a bottom-up approach (NUTS2 level with local integration).

Tourism Seasonality

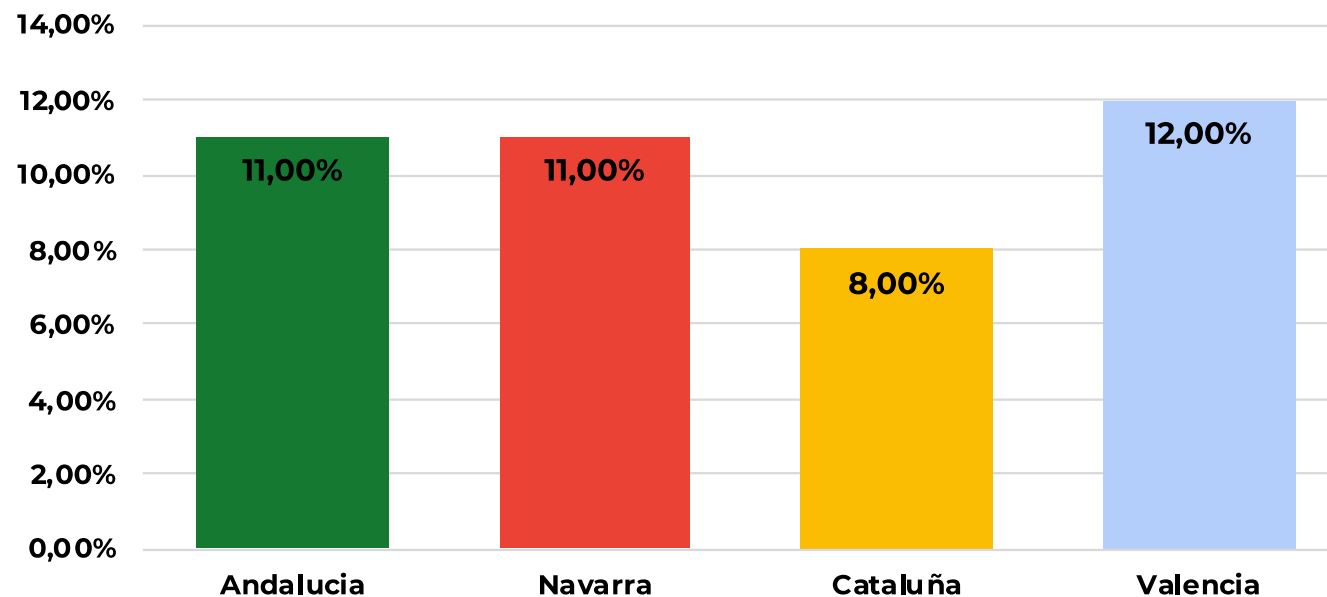
% of destinations with high seasonality



Source: ToT Lab based on data from INE

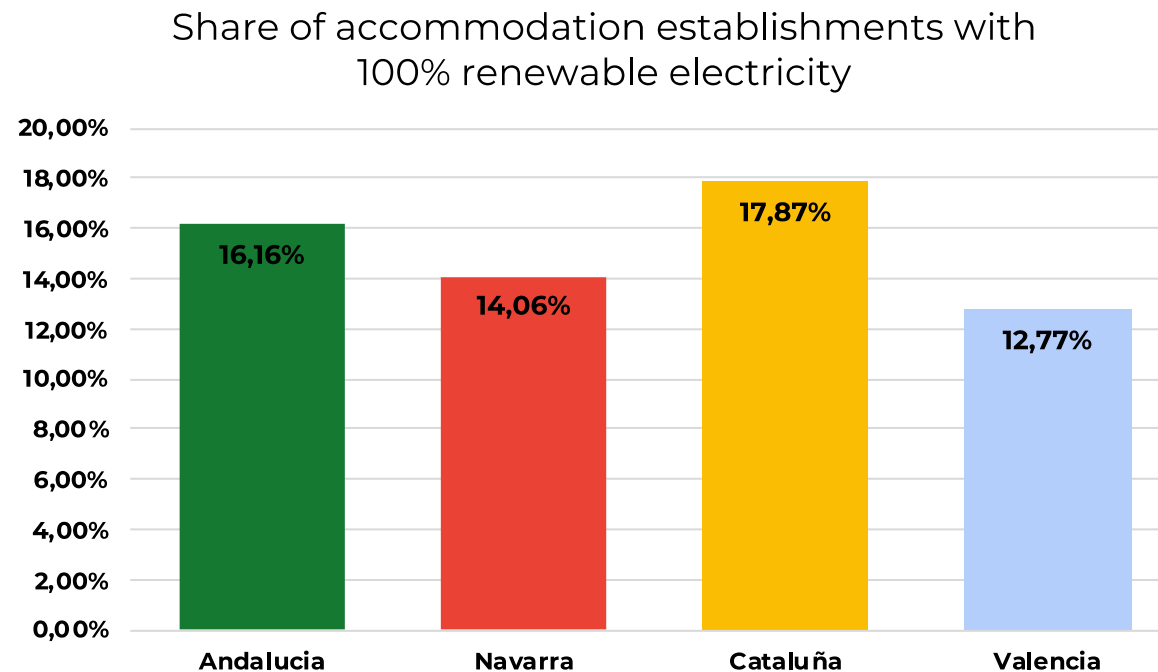
Policy oriented indicator from JRC EU Tourism Dashboard: Facilitates both cross-region and EU-wide comparisons.

Share of the total accommodation capacity (no. of rooms) which is located in areas with “high nature-based recreational opportunities”



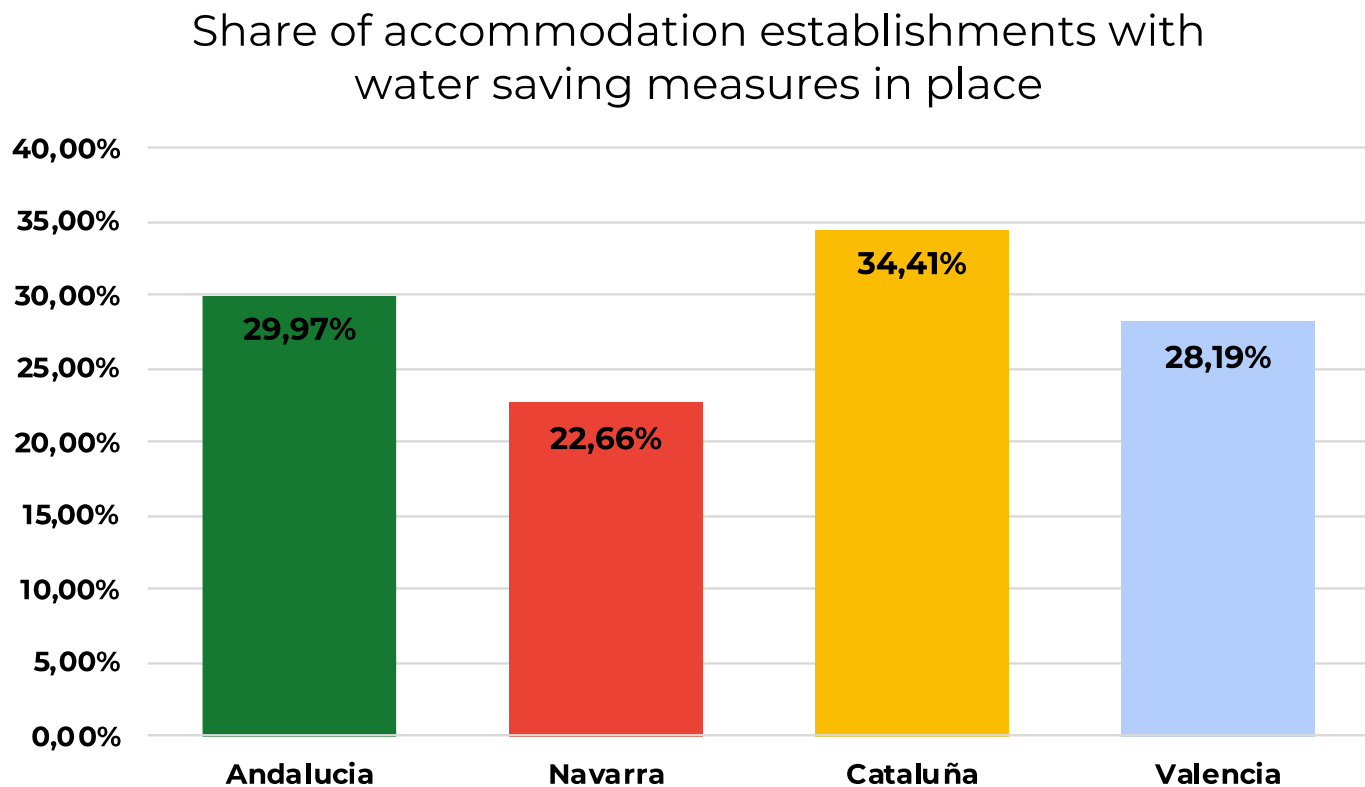
Source: EU Tourism Dashboard. JRC.

Policy oriented indicator using non-traditional/official data sources: Enabling cross-region comparisons, though with limitations due to reliance on web-based data



Source: ToT Lab based on data from Booking.com

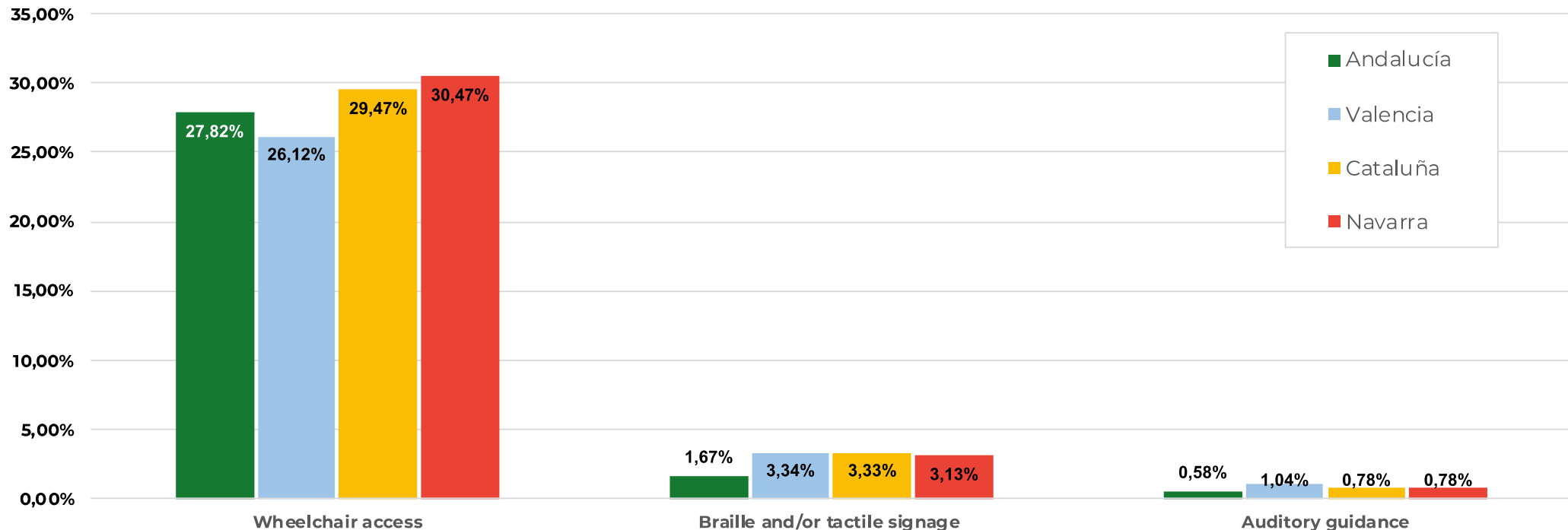
Policy oriented indicator using non-traditional/official data sources: Enabling cross-region comparisons, though with limitations due to reliance on web-based data



Source: ToT Lab based on data from Booking.com

Policy oriented indicator using non-traditional/official data sources: Enabling cross-region comparisons, though with limitations due to reliance on web-based data

Share of accommodation establishments with Accesibility Features (2024)



Source: ToT Lab based on data from Booking.com

Future Ambition

- System to evolve into a shared framework
- Interest by many other regions expressed: observers
- Role of NECSTouR Tourism of Tomorrow Lab: future evolution
- D3Hub designing European Competence Center
- Alignment with UN Tourism and JRC EU Tourism Dashboard

Joseph Stiglitz:

**“What we measure affects what we do
and if we measure the wrong thing, we
will do the wrong thing”.**



Sustainable Tourism Indicators: Data-Driven Strategies for Destinations

Ana Moniche
Turismo y Deporte de Andalucía

Sustainable Tourism Indicators: Data-Driven Strategies for Destinations

Vienna, 12-13 September 2024

Andalucía